



# east greenwich Art Club

PO Box 1608 East Greenwich, RI 02818

May 2016

## President's Message

It is time for our Annual Meeting once again and we will be voting on our Nominating Committee's slate of officers for the coming year. Nominations in addition to the slate presented will also be accepted and

votes will be taken at the May 3, 2016 meeting.

We will try to accomplish this as quickly as possible so that we can all enjoy Marjorie Ball's presentation that will follow at 7:30.

Please try to attend this important meeting.

John Laliberty—  
President

Special points of interest:

- **Next Member Meeting**  
May 3rd, 7pm, The First Baptist Church Hall, 30 Pierce Street, East Greenwich, RI
- **EGAC 2016 Officer Election**—Elections will be held at May 3rd meeting

Inside this issue:

Learn How to Draw People	2
EGAC Committees 2016	2
Member News and	3
Slate of Officers	3
Exhibit Chair Notes	4
Hospitality	4

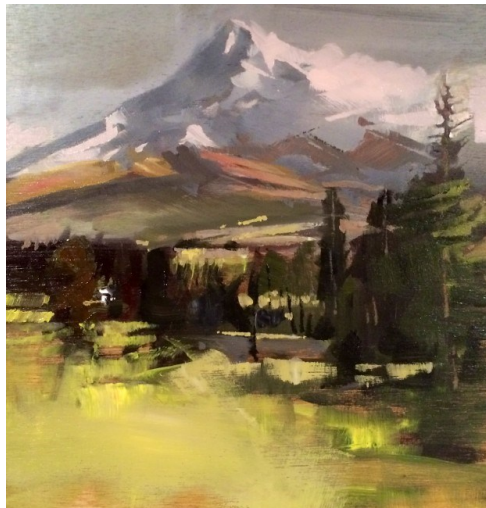
## May Meeting Presenter

### Guest Artist: Marjorie Ball

Marjorie Ball grew up on Long Island. Her early love of drawing and painting was encouraged and developed by the private painting les-

sons she took with a local professional illustrator and classes at the Art Students League and Pratt Institute. After graduating from the school of art at Syracuse University,

Throughout those years, she painted and exhibited her work in local exhibitions, waiting for a chance to follow her heart and paint every day.



she worked as an illustrator, freelance graphic designer, and art educator in Massachusetts and Rhode Island.

Marjorie now paints full time in her studio in East Greenwich, RI. Her paintings have appeared in many juried exhibits and have won multiple awards.

<http://marjorieball.com/>  
and

## Learn How to Draw People: 7 Tips from Professional Artists

By Cherie Haas, Online Editor (website for complete article) <http://www.northlightshop.com/how-to-draw-people>

### 1. Drawing Hands

Keep in mind the bone and muscle structure beneath the surface. In some places the surface is influenced by the angular bones, in others by the soft muscles. Don't round off all the forms or the subject will look rubbery. ~from Walt Reed (author of *The Figure*)

### 2. Drawing People and More

A classic way to draw something with correct proportion is to create a grid and place it over your reference photo, then draw a grid on your paper. Erasing these lines can be a pain, so a lightbox (or window on a sunny day) can be used instead. Place the grid on the lightbox, tape it down, then place your paper over the grid. You can see the grid through the paper and there's no erasing later. ~from Carrie Stuart Parks and Rick Parks (authors of *The Big Book of Realistic Drawing Secrets*)

**3. Drawing People**  
A useful device is a shaft or midline, which is a line drawn through the middle

of a human form to see how it is supported. A midline acts like the armature underneath movement and direction. It also simplifies the process of seeing and indicating the angles of specific forms. ~from Robert Barrett (author of *Life Drawing*, now available as an ebook)

### 4. Opposites Attract

An essential principle of design that also relates to the human figure is the concept of opposites. The use of opposites, or contrast, exists in all the arts to create interest. In the human figure, a contrapposto position, where the weight is on one leg, is usually more interesting than one where the weight is equally balanced on both legs or throughout the figure. Each opposite helps strengthen and clarify the other. ~from Robert Barrett (author of *Life Drawing*, now available as an ebook)

### 5. How to Draw a Person

The muscles are the body's substructure. They are a big part of what gives the figure its shape and form. Understanding what goes on beneath the surface will help you see important details that might have gone otherwise unnoticed. ~from Jeff

Mellem (author of *Sketching People*)

### 6. How to Draw Characters

For a visual artist, choosing how to depict an event-- what parts are emphasized and what are downplayed-- is done through staging. If there are enough clues through the interplay of body language, setting, costumes, props and even artistic style, the viewer will understand the story and the meaning behind it.

~from Jeff Mellem (author of *Sketching People*)

### 7. Make the Most of Your Time

Don't necessarily add more detail in a longer study-- spend the extra time observing the overall pose more carefully. You may want to choose a less familiar viewpoint. This figure (left), for example, is foreshortened because it's seen from a high eye level. There are some surprising correlations of different parts of the body. Note how the fingers of her right hand appear to reach her calf and are even in line with the toes of her left foot! ~from John Raynes (featured in the video *Drawing & Painting People: Anatomy of the Body*)



Image courtesy of John Raynes.



Wood Print Rack \$10—  
see Beth Johnston  
401-633-2463

## EGAC Committee Chairs for 2016

Hospitality: Ann Bianchi  
Membership: Rose Manson  
Newsletter: Beth Johnston  
Nominating: Debra Bergeron  
Program: Bev Silva  
Publicity: Christine McIntyre-Hannon

Scholarship: Joyce Neville  
Sunshine: Rita Williams  
Web Site: Beth Johnston  
Art Shows: Jeannine Anderson  
Standing Committees appointed by the President

## Member News and Exhibits

Executive Director David Quiroa and Curator Ricky Gagnon would like to invite you to come to the Spring Show of **New Hope Art at the Cranston Senior Enhancement Center** located at 1070 Cranston St, Cranston, RI. The Spring Show will feature over 350 pieces of 2D and 3D art including ceramic, digital, drawing, furniture, glass, mixed media, mosaic, painting, photography, and sculpture from 85 local, national, special needs, student and senior artists. The Spring Show features 26 new artists showing with us for the first time who range from beginner to established including Gene Burgess, Jean Green, Rosemarie Manson, Nancy Nielsen, and Jeannine Anderson. Show runs through June, hours 8:30-4:30, Monday through Friday. Please visit their gallery page on Facebook or visit our blog at the link below for more information on this wonderful gal-

lery. <http://newhopeartgallery.blogspot.com/>

Bev Silva was awarded Honorable Mention for her mixed media collage "Travelogue--Greece" in the **Lens Free Exhibit at Wickford Art Association** which runs through May 1

Trish Marcaccio, Carol Reiss, Ron Joseph and Beth Johnston had a work of art accepted into the **Wickford Art Association's Poetry & Art exhibit**. Poets will be assigned a work of art and write a poem inspired by that piece. The exhibit runs from 7/22 to 8/14. Open Reception on Friday 7/22 6:30 - 8:30 PM where both the artist and poet will be available to discuss their work.

Joan Hoyle will be teaching a multi-media class at the **Brunswick Center in Shal-lotte NC**. she has been teaching at the center for

over a year now. Also, she will be attending the "Oil Painters of America convention in Dallas, Tx. from May 13 to May 16. She will be going with her husband, Bill who has been accepted as a model for the painting demonstrations.

Trish Marcaccio was awarded the Judge's Award for her Watermedia /Collage "Labyrinth" in the **Wickford Art Associations Members' Show** in March. She also had three paintings accepted into the **Warwick Museum of Art Exhibit** "Creative Fusion" which runs through May 13, 2016.

Marilyn Mooney, Dianne Webb, Beth Johnston, Jean Jeannine Anderson, Joan Edge, Kathy Martino, Nancy Nielsen, Rita Quevedo, Robert Nardi, and Ann Gemma will be exhibiting at the **Main Street Coffee** shop in East Greenwich RI



Masked by Rosemarie Manson

*This world is  
but a canvas to  
our imagination  
~ Henry David  
Thoreau*

## EGAC Slate of Officers for 2016

**Election of Officers will be at the Annual Meeting on May 3, 2016. Nominations can be made from the floor. Below is the current slate of officers**

- President: John Laliberty
  - 1st Vice President: Sharon Eisman
  - Corresponding and Recording Secretary: Joyce Antonacci
  - Financial Secretary: Nancy Neilson
  - Treasurer: Ron Joseph
- 3 of above must be artist members.

### Directors of the Corporation:

- John Laliberty Term 2018
- Linda Eastman Term 2017
- Nancy Moretti Term 2018



"Clyde Puffer" model boat 24" long built from scratch by Ian Sanderson



## Officers and Committees

**President:**

John Laliberty  
laliberty2@verizon.net

**1st Vice President:**

Sharon Eisman  
sharon@star-designs.com

**2nd Vice President:**

Peggy Henderson  
artonacard@hotmail.com

**Corresponding and Recording****Secretary:**

Jeannine Anderson  
imjeannine@yahoo.com

**Financial Secretary:**

Nancy Neilson  
nwneilson@gmail.com

**Treasurer:**

Ronald Joseph 885-3796  
rpjoseph@hotmail.com

**Directors:**

John Laliberty  
Laliberty2@verizon.net

Linda Eastman  
LE71@aol.com

Jeannine Anderson  
Imjeannine@yahoo.com

**Hospitality:****Membership :**

Rosemarie Manson 231-2802  
rosemariemanson@me.com

**Newsletter:**

Beth Johnston  
Beth@bethjohnstonart.com

**Nominating:**

Tracy Taylor  
tracysbest@gmail.com

**Program:**

Trish Marcaccio 884-5429  
trish2423@cox.net

**Publicity:**

Peggy Henderson  
artonacard@hotmail.com

**Scholarship:**

Joyce Neville  
MNNeville48@cox.net

**Sunshine:**

Rita Williams 739-5026  
paintingsbyrita@aol.com

**Web Site:**

Beth Johnston  
Beth@bethjohnstonart.com

**Art Shows:**

Jeannine Anderson  
imjeannine@yahoo.com

---

## Notes from Jeannine Anderson—Art Show Committee Chair:

Thank you to Nancy Moretti and Debbie Calabro for the wonderful job they did on chairing the Annual Show at the Warwick Public Library, to Arline Pepper and Sharon Smith for hanging the show and all others who volunteered to help with this endeavor.

The show was judged by Rob Rey, a highly regarded artist who graduated from RISD and currently works full time as a fine artist and illustrator. He has shown in many national juried exhibitions and has won many awards too numerous to mention here.

Best in Show went to Sharon Smith for "Flowers Galore", First Prize to Christine McIntyre Hannon for "Fox & Turtle", Second Prize to Joseph P. Hannon, Jr. for "China & Lace", Third Prize to Dianne Webb for "Country Side Tuscan", Fourth Prize to Tricia Marcaccio for "Indigo Blues", Honorable Mentions to Pasqualine Rivellil for "The Pose", to Kathleen Lombardo for "Two Cute", to Arline Pepper for "Into The Woods" and to Joyce Antonucci for "Roger Williams Park".

Thanks to all participants for removing their paintings down by the required date. Wil Gregerson, Library Director was very impressed with the quality of the work displayed and couldn't say how delighted he was to have had us there and is looking forward to having us back.

The next show will be at RISCA's Atrium Gallery in Providence, hanging date Saturday July 30, 10-12 pm and will run through August 19, 2016. We will share more information with you at the May 3 meeting.

**Hospitality Team:** Hospitality Team: Kathleen Lombardo, Marilyn Mooney, Veronica Martin, Rosemarie Coren will be providing the refreshments for the May meeting.

### **June 2016 Newsletter Deadline:**

The deadline for submissions to the June EGAC Newsletter is Monday, May 23, 2016.