



November 2015

President's Message

While going through some of my mother's art books the other evening, I came across one of her favorites, Harley Brown's *Eternal Truths For Every Artist*, by Harley Brown with Lewis Barrett Lehrman. Brown says "Ninety-nine percent of all art books end up in a bookcase, never to be looked at again. I want this book to be the kind of book you refer to again and again- every page remarkable, important to YOU...The art world is littered with the spirits of people who gave up, just didn't see the fun and the inspiration of being part of the artist's wonderful world...Never, never, never, under any circum-

stances, give up faith in your ability! On paper or on canvas, you really do have something to say. Trust whatever is inside of you. Stick with it!"

The book has twelve chapters filled with wonderful paintings and great advice. You will find dozens of ways you can improve your own painting while he shares everything he has learned the hard way. The book is informative, inspiring and entertaining all at the same time. It is not a book to be read from cover to cover. Read a section and then stop to incorporate the information into your own paintings or sketches. Practice the vari-

ous techniques as you go along.

There are many books out there in libraries and on line just waiting to help and inspire you as an artist. Make use of this information in your own work and become a better artist. A lot of this information is universally true and applies to all forms and any style of art. Try doing and seeing things differently for a change and see what happens.

John Laliberty

Special points of interest:

- **Next Member Meeting**
November 3rd, 7pm,
The First Baptist
Church Hall, 30 Pierce
Street, East Greenwich,
RI

Inside this issue:

Fall Member Show	2
Member News	2
Discontinued Brushes	2
Hospitality	2
Officers and Committees	3
Art Supplies Wanted	3
Friends of EG Library Exhibit	3

October Meeting Presenter

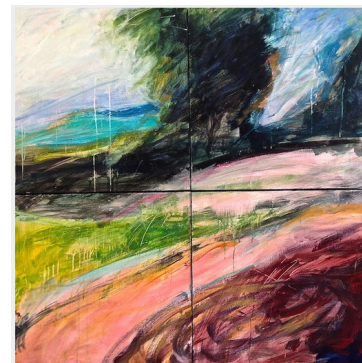
Guest Artist: Karen Rand Anderson

"My current art practice is focused on landscape painting, primarily using acrylic and water-based media. Through isolating fragments of previous paintings, my recent work reflects an abstracted, energetic investigation of place. The images are meant to suggest to the viewer a sense of someplace he/she may or may not have been. Created with an unbridled palette and arresting titles, my intention with this current

work is to ignite memory, question, and mystery about the personal and emotional places we seek.

"In my mixed-media sculpture, I have been interested in posing visual questions regarding the nature of relationship — between natural materials, physical and emotional tension, and metaphor. Natural materials such as bones, branches, saplings, grapevine, moss, stones, and sheep's fleece, along with paper, canvas, wire, and found and altered objects comprise my three-dimensional work. The

viewer is invited to address his or her own relationship to the energy, materials, symbolism and metaphors that await discovery."



Fall Member Show

Thanks to all who have participated in the show hanging at the E G Library. Problems stemming from the neighboring church steeple's stability forced closing of the street and forced rescheduling of the hanging. The library is open again and I am happy to report that both Peggy Field and Ian Sanderson have sold a painting in the last couple of days. Take down is scheduled for Oct. 31. If unable to pick up your work, please try to get someone to do it. Someone left an oval platter (white background w/fall colored leaves) behind at the Opening Reception. You can retrieve it at the next meeting or let me know who if it belongs to. Jeannine



Crescendo by Tricia Marcaccio

Member Exhibits and News

EGAC member Celeste Chute-Wright's painting, "Thanks for Teaching Me How to Sail, Dad" has been accepted into the Bristol Art Museum exhibit, "Remembrances". This exhibit is being held at the **Rogers Free Library** 525 Hope St. Bristol RI from 10/12, 2015 to 1/6, 2016.

Joan Hoyle, newly elected "Life member", and her husband Bill attended a "Salon" in Birmingham, Alabama from Oct 7 to Oct 10, sponsored by the Oil Painters of America. Joannie was juried into the OPA on January of 2014. Demos were presented of Portraits, Still Lifes, Plein Air and Landscapes. It was an enjoyable and learning experience. OPA is dedicated to realism in art. "We were concerned about getting to Birmingham, from here in North Carolina, with the South Carolina

floods. We had to go through Columbia, SC which had received over two feet of rain, but we had no trouble, Route 20 was open all the way. We are looking forward to the Dallas, Tx. convention next Spring." As of June, Joannie has also become a member of the (PSA) Portrait Society of America, and is also teaching art classes at the Brunswick County Senior Center.

Peggy Henderson and Peggy Field are painting in Marjorie Ball's class "painting from the ground up" The class is offered by the Wickford Art Association. A great class for learning. Looking forward to the members' holiday show. Each member will show ten paintings or sculptures. The sale will start on November 27 till December 19, Wednesday-Sunday, 10am-6pm.

Ian Sanderson's painting called "Biking" was sold at the Artist Members Fall Exhibit at the **East Greenwich Library**.

Trish Marcaccio, Marilyn Mooney, Ann Gemma, Beth Johnston, Bob Nardi, Jean Green, Jeannine Anderson, Joan Edge, Kathy Martino, Nancy Nielsen, Rita Quevedo will be exhibiting their work at **Main Street Coffee** in East Greenwich.

"The two most fortunate things that can happen to a painter are, first, to be Spanish, and second, to be named Dali. Those two fortunate things have happened to me."

- Salvador Dali

Discontinued Brushes

Marilyn Mooney likes Kolinsky sable brushes, but has let us know that they are hard to find. "I used to get them at Jerry's Artorama, unfortunately they

no longer carry them. At Jerry's they said that they aren't being made anymore and if I found any to buy them while I can. If anyone is interested, Dick Blick's

(www.dickblick.com or call 1 800 828-4548) is having a half-price sale on Princeton Siberian Kolinsky sable brushes." Marilyn

Hospitality

November's refreshments will be provided by Bev Silva, Michele Lilly, Dianne Webb and June Flori

Shipping Framed Paintings and Photographs

AirFloat Systems

Airfloat Systems provides inexpensive, reusable packaging solutions for shipping and protecting fine art. Our customers include art galleries, museums, auction houses, and artists all over the world. Below are some of their products

StrongBox™, "The Original Art Shipper", is the protective solution for shipping framed art. Your art is safely encased in three layers of protection: two layers of convoluted foam and one layer of Perf-Pack foam easily customized in a few minutes. Prices start at \$38 for max frame size of 14x19x2

PrintPad, a container within a container, eliminates the worry of damaged prints by nestling your prints inside multiple layers of protection. PrintPad is available in a variety of sizes - perfect for all your shipping needs.

Glas-Skin is a protective tape applied directly to the entire surface area of the glass. If the glass shatters, it remains secured to the Glas-Skin and away from your art. When shipping your art, protect it from glass breakage with Glas-Skin.

From: Saatchi Art

<http://www.saatchiart.com/packaging>

There are two packaging

methods that keep paintings well protected: using bubble wrap and cardboard, or using custom-built wooden crates.

To pack unframed paintings:

Try not to directly touching the artwork. Use tissue paper or photography white cotton gloves.

Wrap the piece in acid free tissue paper. For additional protection against moisture, wrap the artwork with plastic.

Fold four pieces of acid-free tissue paper into triangles with one side open, then place the triangles on each corner of the work. These help secure the piece to a strong backing material.

Taping only on the paper corners you just made, mount your wrapped piece with tape to sturdy cardboard or foamcore.

Place a few layers of cardboard on both sides of the newly secured piece. Tape these pieces together.

The final piece of the packaging is the outside cover. Take two pieces of corrugated cardboard, place the piece in between them and securely tape all sides. A mirror box can be used if you want more protection.

To pack framed paintings:

Find a box or build a crate that can fit the piece, with 3 inches of space available on

all sides of the frame.

Wrap you artwork with acid-free tissue paper.

Wrap the piece in bubble wrap, ensuring adequate coverage on the corners since they are most susceptible to damage during transport.

Place a layer of foam or your packaging material of choice in the box, creating a layer to rest the frame on.

Pack all open areas surrounding the piece with packing material. The more snug the fit, the less the potential for damage.

For both methods, remember to properly insure the piece if necessary and to clearly mark the box as fragile.

Other Resources:

<http://reddotblog.com/how-to-ship-paintings-a-step-by-step-guide-for-artists-and-galleries/>

<https://shiphawk.com/how-to-ship/painting>

<http://www.oilpaintersofamerica.com/resources/articles/packing.cfm>

<http://www.oilpaintersofamerica.com/resources/articles/packing.cfm>

<http://lauradenhertog.com/blog/10972/fool-proof-method-for-shipping-art>



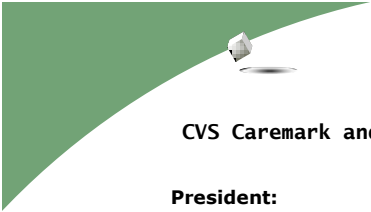
Beach Rose by
Beth Johnston

South County Art Association Holiday Sale

Peggy Henderson and Beth Johnston will be participating in the SCAA Holiday Sale.

Each member is allowed to sell up to ten paintings or sculptures. There is also a fabulous selection of pottery made by mem-

bers. The sale runs from November 27 till December 19, Gallery hours are Wednesday-Sunday, 10am-6pm.



CVS Caremark and Committees

President:

John Laliberty
laliberty2@verizon.net

1st Vice President:

Sharon Eisman
sharon@star-designs.com

2nd Vice President:

Peggy Henderson
artonacard@hotmail.com

Corresponding and Recording Secretary:

Jeannine Anderson
imjeannine@yahoo.com

Financial Secretary:

Nancy Neilson
nwneilson@gmail.com

Treasurer:

Ronald Joseph 885-3796
rpjoseph@hotmail.com

Directors:

John Laliberty
Laliberty2@verizon.net
Linda Eastman
LE71@aol.com
Jeannine Anderson
Imjeannine@yahoo.com

Hospitality:

Membership :
Rosemarie Manson 231-2802
rosemariemanson@me.com

Newsletter:

Beth Johnston
Beth@bethjohnstonart.com

Nominating:

Tracy Taylor
tracysbest@gmail.com

Program:

Trish Marcaccio 884-5429
trish2423@cox.net

Publicity:

Peggy Henderson
artonacard@hotmail.com

Scholarship:

Joyce Neville
MNEville48@cox.net

Sunshine:

Rita Williams 739-5026
paintingsbyrita@aol.com

Web Site:

Beth Johnston
Beth@bethjohnstonart.com

Art Shows:

Jeannine Anderson
imjeannine@yahoo.com

Art Supplies and Craft Supplies Wanted!!!

Art Supplies Needed to Help People with Mental Illness. The Kent Center would greatly appreciate donations of used or new art supplies to stock art classes for youths, teens, and adults who struggle with mental illness. Donations new and used such as crayons, markers, watercolors, acrylic paints, construction paper, pipe cleaners, fabric, buttons, coloring books, etc. Creating art reduces stress, anxiety, fears and depression in people with mental illness - and raises a person's quality of life.

They are especially in need of Acrylic paints - Canvases and canvas boards - canvas paper - glass with and without frames - vases - clear plates Please bring your donations to the next meeting

5th Annual Juried Art Exhibit WINTER'S EVE DECEMBER 3 – December 31, 2015

Howard Silverman Gallery . East Greenwich Free Library

OPENING RECEPTION DEC 3 . 6-8pm

Music by classical harpist, Judith Mitchell

82 Peirce Street . East Greenwich, Rhode Island

401-885-1699

Facebook "Winter's Eve at the Library"

Juror – Kate Huntington: The Winter's Eve "Juror's Award" includes a SOLO 2015 Exhibit at the gallery.

IMPORTANT DATES & Information

Exhibition: Thursday, December 3 to Thursday, December 31, 2015

Opening reception: Thursday, December 3rd, 6pm – 8pm

Delivery dates: Friday, November 27, 2-4pm and Saturday, November 28, 10am – 1pm

Pickup for declined work: Monday, November 30, 4pm – 6pm (artists will be notified via email no later than 11/29 of their acceptance/decline status)

Pickup of exhibited work: Saturday, January 2 . 10 am to noon

Fee: \$10 for one; \$25 for three pieces of art. No commission is required by the Friends of the Library. Artist receive 100% of sale.

PLANNING TO SUBMIT YOUR ARTWORK? Let us know with an email to: friendseglibrary@gmail.com. Just put "submitting" in the subject line.