



east greenwich Art Club

PO Box 1608 East Greenwich, RI 02818

October 2015

Special points of interest:

- **Next Member Meeting**
October 6th, 7pm, The First Baptist Church Hall, 30 Pierce Street, East Greenwich, RI

Inside this issue:

Fall Member Show	2
Member News	2
Member Passing	2
Hospitality	2
Officers and Committees	3
Donations	3

President's Message

Last year, under Linda Eastman's guidance, the club was once again incorporated with a revised Constitution and Bylaws as a Domestic Non-Profit Corporation. We also received a determination from the IRS that we are exempt from federal income tax under Internal Revenue Code 501(c)3 and that we are qualified to receive tax deductible donations as a 509(a)2 public charity. We are now in the process of getting a Sales and

Use Exemption for an Exempt Organization from the RI Sales and use tax.

At the October meeting all committee chair people will wear a name badge with their committee name on it. Please talk to them before the meeting or during the break and join a committee in which you are interested. Your help is needed to make running this club easier and more enjoyable for everyone. Find out how

you can help.

We are working hard on updating the committee hand-books. Once we finish this project, all of our paperwork will be up to date, modernized and in an easily changeable format. Within the next couple of months we should be finished with all of this updating and we can all get back to our artistic endeavors.

I hope to see everyone at the next meeting,

John Laliberty

October Meeting Presenter

Guest Artist: Nina Ackmann

"I am intrigued by color in its infinite variety. It is especially interesting to see that a color can appear to change its hue when adjacent to another color. As we humans have personalities and certain relationships can connect us to warm or cool feelings, so too can color

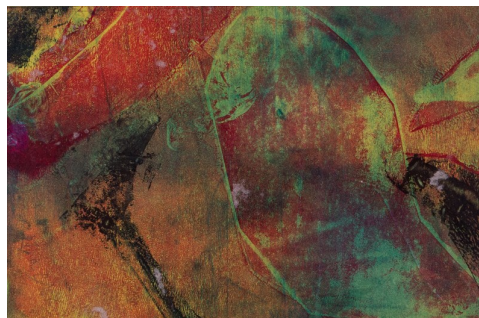
relationships spark varied emotions. As an artist and retired psychotherapist, I notice the depth in this interplay of color and enjoy the effects within the context of shapes and light.

"I am inspired by whatever

is moving in nature — a running brook, birds nesting, a wave reaching its crescendo. Children at play are especially inspiring to me, as are adults intently involved in their work or thoroughly enjoying themselves.

"In my journey to challenge my hands to develop what my eyes see, I am in a constant state of learning."

<http://www.ninaackmann.com>



Fall Member Show

A sign up sheet was circulated for the Fall Show at the September meeting. For those of you who haven't signed up and would like to, please contact either Joyce Neville at MNeville48@cox.net or 401-451-9151 or Jeannine Anderson imjeannine@yahoo.com or 401-884-9258. There will be a bin for matted works at the

Opening Reception but they must be removed at the end of the reception and those who have note cards may also bring them in that evening.

Entry fee: \$5.00 per piece-- may enter 2 pieces.

Size: One piece at a maximum size of 16x20 including frame and one smaller piece

OR 2 smaller pieces.

Deliver on Saturday, October 3rd 10:00 a.m.-12:00 noon.

Reception: Thursday, October 8th 5:30-7:30 p.m. Everyone is asked to bring a light refreshment.

Pick up art: Saturday, October 31 between 10:00 a.m. and 1:00 p.m.



Crescendo by Tricia Marcaccio

Member Exhibits

Rose Manson has been accepted into the National Show at the **Rhode Island Watercolor Society** Slater Memorial Park Armistice Blvd. Pawtucket, Rhode Island 02861 401-726-1876
www.riws.org <http://rhodeislandwatercolorssociety.wildapricot.org>

She is also showing at **New Hope Gallery**. Cranston Senior Enrichment Center 1070 Cranston Street Cranston, Rhode Island. The present exhibit is up until November 3, and the next show starts on November 17: reception from 4:30pm to 7pm. <http://newhopeartgallery.blogspot.com>

In June, Rose received one of six awards in the National Show sponsored by Attleboro Arts Museum - Possessions: Prized or Otherwise. Her entry was a painting

called 'Beloved Ancestors'; my aunts were wonderful women who shared their time, talents, and wisdom with all of us.

Dianne Webb has been volunteering at **The Kent Center** - Hillsgrove Branch -teaching a Color Theory Class. Loving it - so rewarding!

Trish Marcaccio's watercolor, "Crescendo", was accepted into the **R.I. Watercolor Society's** exhibit "Celebration of the Sea". Exhibit runs from 9/12/15-10/1/15. Her oil painting " Gift from the Sea" was exhibited at the Wickford Art Association's Poetry & Art Show this summer. A smaller version of the same painting, "Beachcomber", was sold to a Westfield, Ma. couple during the exhibit. A commissioned oil painting " Sea Star" was sold to a family in Knoxville

Tennessee after they inquired about a painting they had seen while visiting Main Street Coffee a year ago.

Beth Johnston has three paintings exhibited at **Warwick Museum of Art** and Nancy Nielsen's photo "Behind the Scenes" won an honorable mention at the RI Open Juried Show. The exhibit is running through October 23rd

Nancy also has a piece in the **Newport Art Museum's** exhibit of Art League of RI's work exhibit, 9/5 - 1/3/16, and one at the **Photographers' Guild of Newport**, 9/25 - 1/17/16. Reception for both is Friday, Sept. 25 from 5 -7p.m.

Beth also has 8 new paintings at **South County Art Association's** Member's Invitational running through 10/10 and will be at Scituate Art Festival 10/10-10/13, booth A35

"Derive
happiness in
oneself from a
good day's
work"
~ Henri Matisse

Member Passing

We have learned that Ralph Knox passed away in late August at Kent County Hos-

pital. A sympathy card was sent out to his family last week. He was a talented

water colorist who was a member for many years.

Hospitality

October's refreshments will be provided by Linda Eastman, Judy Mulligan, Celeste Chute-Wright and Joyce Neville.



Autumn Glory by Rita Williams

Officers and Committees

President:

John Laliberty
laliberty2@verizon.net

1st Vice President:

Sharon Eisman
sharon@star-designs.com

2nd Vice President:

Peggy Henderson
artnacard@hotmail.com

Corresponding and Recording Secretary:

Jeannine Anderson
imjeannine@yahoo.com

Financial Secretary:

Nancy Neilson
nwnilson@gmail.com

Treasurer:

Ronald Joseph 885-3796
rpjoseph@hotmail.com

Directors:

John Laliberty
L aliberty2@verizon.net
Linda Eastman
LE71@aol.com

Jeannine Anderson
I mjeannine@yahoo.com

Hospitality:

Membership :

Rosemarie Manson 231-2802
rosemariemanson@me.com

Newsletter:

Beth Johnston
Beth@bethjohnstonart.com

Nominating:

Tracy Taylor
tracysbest@gmail.com

Program:

Trish Marcaccio 884-5429
trish2423@cox.net

Publicity:

Peggy Henderson
artnacard@hotmail.com

Scholarship:

Joyce Neville
MNeville48@cox.net

Sunshine:

Rita Williams 739-5026
paintingsbyrita@aol.com

Web Site:

Beth Johnston
Beth@bethjohnstonart.com

Art Shows:

Jeannine Anderson
imjeannine@yahoo.com

Art Supplies and Craft Supplies Wanted!!!

Art Supplies Needed to Help People with Mental Illness. The Kent Center would greatly appreciate donations of used or new art supplies to stock art classes for youths, teens, and adults who struggle with mental illness. Donations new and used such as crayons, markers, watercolors, acrylic paints, construction paper, pipe cleaners, fabric, buttons, coloring books, etc. Creating art reduces stress, anxiety, fears and depression in people with mental illness - and raises a person's quality of life.

They are especially in need of Acrylic paints - Canvases and canvas boards - canvas paper - glass with and without frames - vases - clear plates Please bring your donations to the next meeting -- Tuesday, October 6th.

Painting Successful Watercolours from Photographs

by Geoff Kersey \$16.95

Artists who work from photographic source material need to learn how to adapt and improve in order to create a successful painting. Geoff Kersey is a master of this way of working, and here he shows how it is done. Reference photographs, colour charts and preparatory sketches are shown alongside all the finished paintings in this book, with full details of the adaptations and creative processes involved.

<http://www.amazon.com/Painting-Successful-Watercolours-Photographs-Kersey/dp/1844489981>

Three Painting Classes:

Beth Johnston will be teaching three classes in Coventry RI. This spot is also available if you are interested in your own workshop or exhibit. Call Beth for details: 401-633-2463

- Introduction to Painting with Oils or Acrylics (Mondays 11/16 - 12/14)
- Paint Small, Paint Fast (Thursdays 10/15 - 11/12 6-9pm)
- Introduction to Encaustic Painting (Tuesdays 10/27 - 11/24 6-9pm).

