



November 2023

<http://eastgreenwichartclub.org>

From the President:

I have so much to share, I'm not sure where to start!

First, I hope you will attend the activities we have planned for you this next month!

We have created a theme for two activities: Art created with glass:

Tuesday November 7th: Alice Gebhart and Pike Powers will discuss their extensive experience creating art with glass. These are extraordinary artists we hope you will enjoy meeting!

Saturday November 18th: Day trip to the Glass Flower exhibit at the Harvard Natural History Museum. This is a logical follow-up to our November 7th event, and the first time we can see the newly refurbished exhibit! Details attached!

Secondly, we had a last-minute opportunity to show our members' work to a wide audience working with the Rhode Island Judiciary's "**Art in the Courthouse**" project at the J. Howard McGrath Judicial Complex, 4800 Tower Hill Rd., Wakefield, RI

Our members' artworks now fill the walls at the McGrath Judicial Complex. It is a gallery tradition that many other local artists have followed over the years. This program's objective is to support, introduce and showcase Rhode Island's artistic talent to approximately a few hundred people who may pass through the courthouse on a given day. A major goal is to bring original and vibrant art to the brick walls of the courthouse and to create an environment that is warm and peaceful, to lift one's spirit, and to brighten the atmosphere.

Saturday December 2nd: We will host an Open House at the McGrath Judicial Center, Wakefield. Normally closed on a Saturday, the Courthouse will be open to the public from Noon until 2 PM specifically for our exhibit. *Please put this on your calendars and encourage friends and family to attend.*

Thirdly, I wanted to share a tidbit from member Joan Klatil Creamer. Did you ever dip your brush into the wrong water container or a coffee cup? How about dipping it into a glass of whiskey? Joan is one of only 150 select members of this special society that paints in miniature. Check out a description of the group at [Whiskey Painters of America \(moosewalkstudios.com\)](http://moosewalkstudios.com), posted by another member. A new medium!

Fourth, I'm happy to announce that two high school students have chosen to work with Annie Bobbitt and Tom Hutchinson to manage one of the Town Hall display cases for the EG School District's art programs. This is one way students can meet their community service requirement!

Fifth, I'd like us all to welcome our newest member, Linda Stefanidakis, recently moved from Massachusetts to East Greenwich. See her work at <http://lindastefanidakis.com/>

And (whew) **Last,**

Reserve Tuesday December 5th: for a social Holiday Gathering. Details to come.



We meet on the first Tuesday of the month at 7:00, except for January, July and August at the

**United Methodist Church
1558 So. County Trail
East Greenwich, RI**

Snacks will be courtesy of these members:

Deb Calabro, Veronica Janssen and Don Mong.

Other members' contributions always welcome!

Officers and Committees

President: Daniel Lake

Vice President: Ron Joseph

Treasurer: Annie Bobbitt

Financial Secretary: Don Mong

Recording Secretary: Patricia Lake

Directors: Linda Sanfilippo, Annie Bobbitt

Publicity: Linda Sanfilippo

Facebook: Daniel Lake

Programs: Jeannine Anderson, Sharon Smith, Ian Mohon

Membership: Tom Hutchinson

Newsletter: Rosemarie Manson

Sunshine: Rita Williams

We need:

- Volunteers to help Linda Sanfilippo with our school projects (interact with art teachers, scholarship program).
- Volunteers to work with our exhibiting programs (Library liaison- see Jeannine Anderson, Town display cases- see Annie Bobbitt or Tom Hutchinson, 333 Main Street Gallery- see Ian Mohon or Ron Joseph)

About Town – Supporting Fellow Artists

We have many of our members showing for Christmas, but due to a short timeline preparing this newsletter, here are only a few:

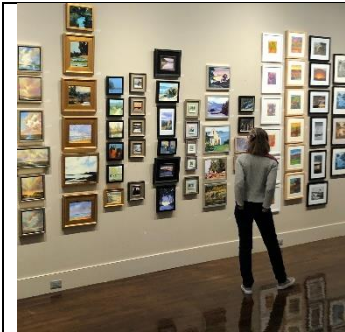
13 members: Who are exhibiting at the McGrath Judicial Complex:



A directory of their works is onsite:



From Sue Aitchison: and other members:
Many “Little Picture Shows”. The granddaddy of them all:



Little Pictures Show & Sale 2021

November 7 to December 23

GALLERIES FREE AND OPEN TO THE PUBLIC
SEVEN DAYS A WEEK, 12-5pm

the Little Pictures Show & Sale is the oldest and largest exhibition of its kind in the United States. This year, the beloved tradition turns 117 and continues to be a strong source of pride for the historic Providence Art Club. The show will feature over 600 works of art sized at 16” x 16” or less and priced at no more than \$300.

From Rosemarie Manson: Is exhibiting at the Blue Door in Wickford and also be in this show at Pawtucket Arts Collaborative. And finally, I’ll participate in RIWS online show which is open to everyone nationwide.



RIWS Presents:
Negative Spaces: An Online Show
Open to Artists Nationwide
Open to all 2D media (EXCLUDING photography and digital, see more details below)

[SUBMIT HERE](#)

OPENING DATE: November 17th, 2023
TIME: 6:30pm - 8:00pm
EXHIBIT DATES: November 17th - January 6th
LOCATION: Blue Door Studio in Wickford
4 Brown Street, North Kingstown, RI 02352

From Carolyn Hansen: Is exhibiting a few paintings at Le Dolce Galleria in Narragansett and at North Koffee in North Kingstown.

From Ann Bianchi: Ann Bianchi will be exhibiting and selling in the Wickford Holiday Small Works show beginning November 10 to December 22. Ann will also be participating in the South County Art Association's Holiday Sale beginning November 24th. Look for Ann's Original Hand Painted greeting cards at both events!

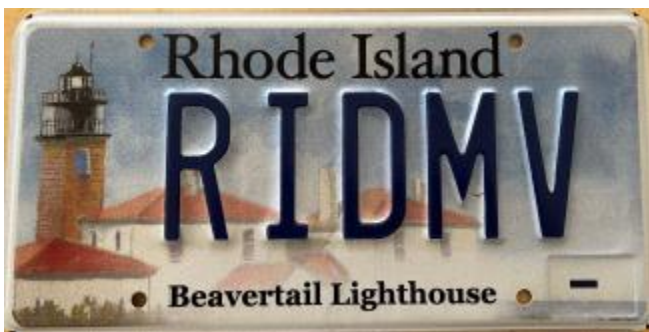


From Dan Lake:

NINE members of the East Greenwich Art Club are represented in the 37th Annual RI Open Exhibit in Warwick.



From Don Mong: “The **Beavertail** Lighthouse, which is the most visited landmark in Jamestown, has been conditionally approved as Rhode Island’s newest charity **license plate**. The **plate**, featuring artwork by Jamestown resident Don Mong, is available!”



Trip to Glass Flower Exhibition at the Harvard Museum of Natural History

Saturday, November 18, 2023

Board Bus: 8:30am
Depart: 8:40am from United
Methodist Church in East
Greenwich (1558 S
County Trail, East Greenwich, RI

Lunch on your own

Return trip
Board: 3:00pm
Depart: 3:10pm from Harvard
Art Museums (Cambridge, MA) to
United
Methodist Church in East
Greenwich (1558 S
County Trail, East Greenwich, RI)

Cost per person: \$85 to include
transportation and entrance to all
exhibits at the Harvard Museum of
Natural History AND the adjoining
Peabody Museum.



Glass Flowers



One of Harvard University's most famous treasures is the internationally acclaimed Ware Collection of Blaschka Glass Models of Plants, better known as the "Glass Flowers." This unique collection was made by Leopold (1822-1895) and Rudolf Blaschka (1857-1939), a father and son team of Czech glass artists. Over fifty years, from 1886 through 1936, the Blaschkas produced 4,300 glass models that represent 780 plant species.

Glass Flower Trip Registration

PLEASE PRINT and include with payment of \$85:

Name: _____

City State Zip: _____

Phone: Cell Home Work: _____

Email: _____

Questions to info@eastgreenwichtartclub.org

Please make a copy for your record

Please make check payable to East Greenwich Art Club, and mail to:
East Greenwich Art Club • PO Box 1608, East Greenwich, RI 02818